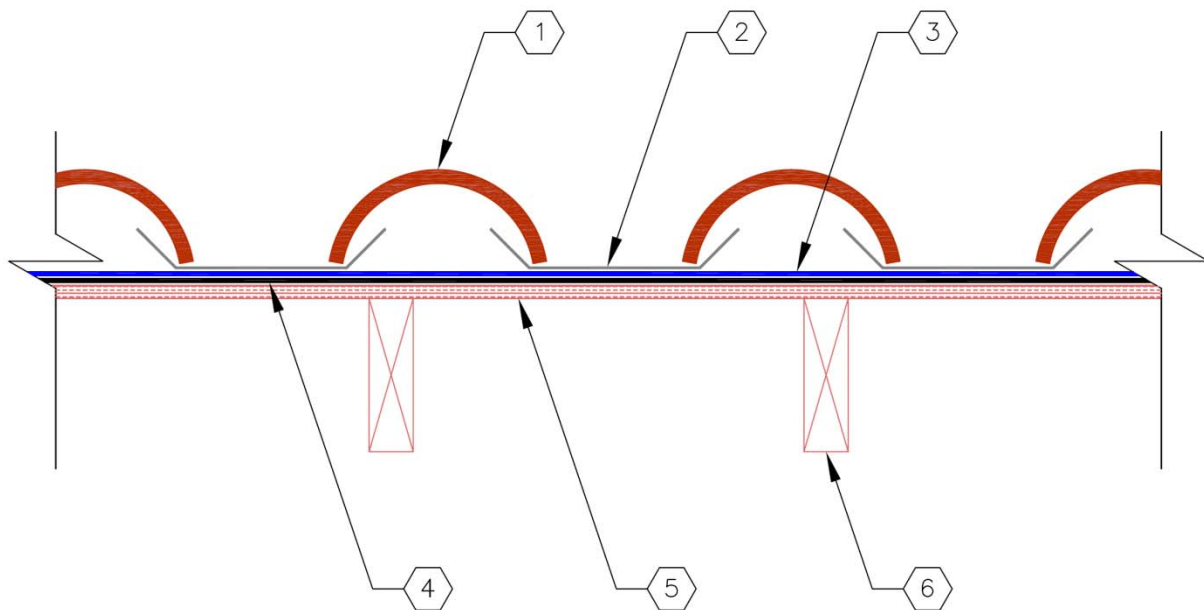


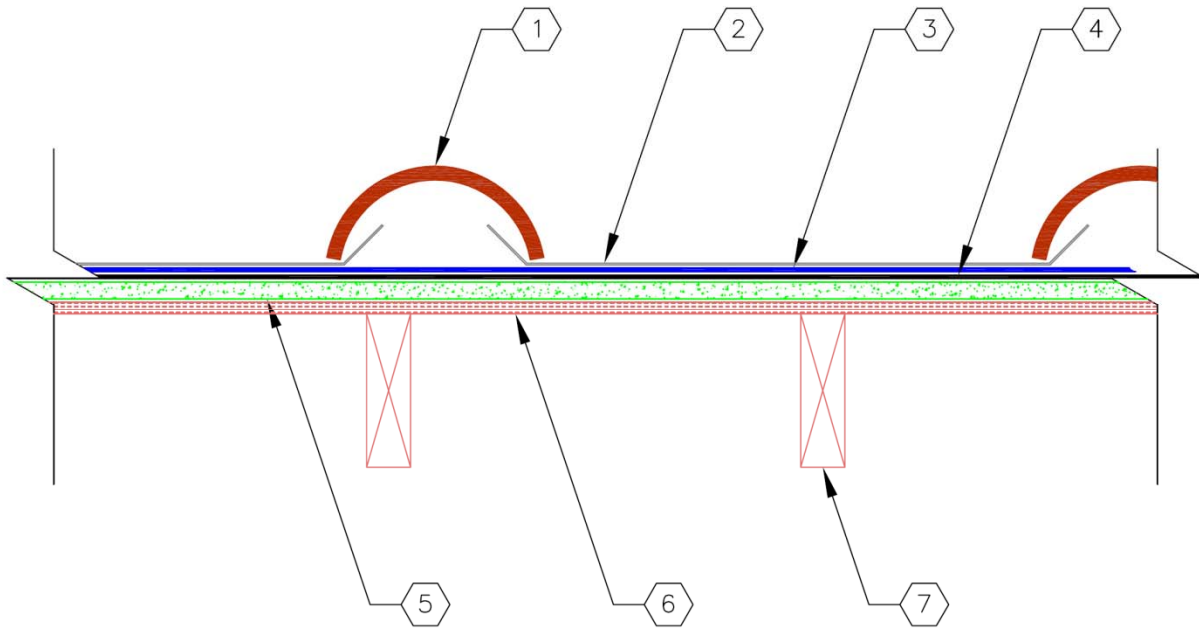
Artezanos Inc.

Class A Rating – ASTM E108

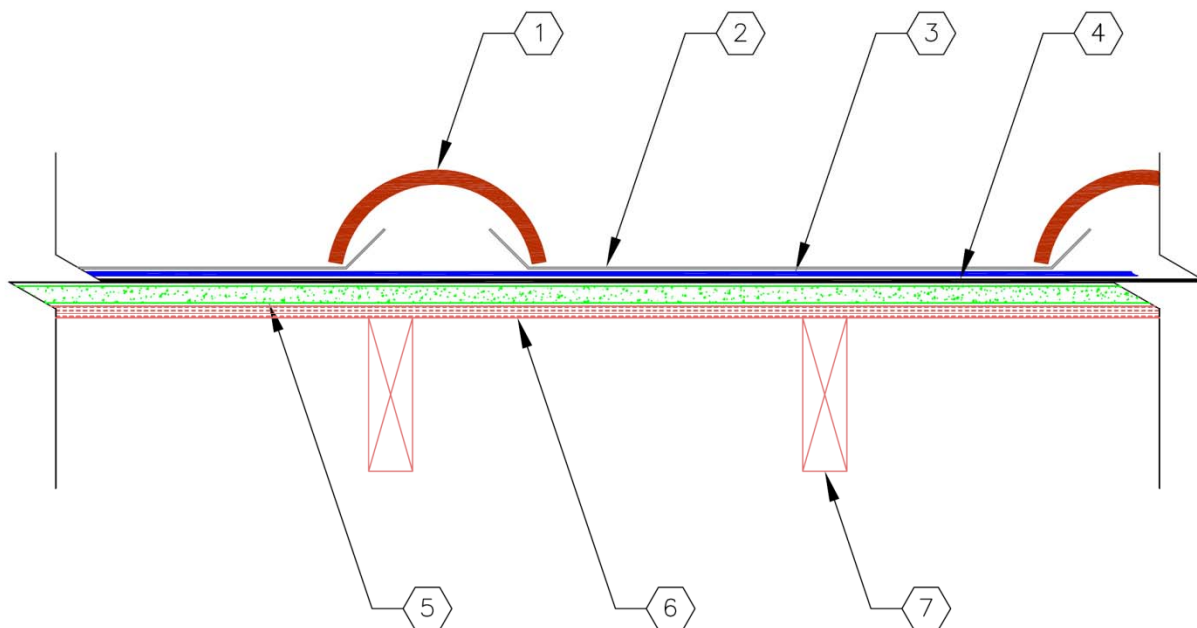
SwRI Report No.: 01.13537.01.310,
SwRI Report No.: 01.17787.01.407 and
SwRI Report No.: 01.20689.15.218



1. Artezanos World Class, Class A , clay tiles (18 × 8 in.), anchored with Polyfoam or Storm Bond™ tile adhesive.
2. Min. 28-ga steel panels, max 5.0-in. width exposed, Galvalume® or painted, anchored with Polyfoam or Storm Bond tile adhesive.
3. Polystick® Polyglass® TU Plus, REX™-SynFelt, SharkSkin® Ultra, and/or SharkSkin Ultra SA (ASTM D1970 approved).
4. Type II (No. 30) asphalt-saturated organic felt fastened with staples only as necessary to hold in place.
5. 15/32-in., 5-ply A-C grade plywood decking.
6. Wood framing.



1. Artesanos World Class, Class A , clay tiles (18 × 8 in.), anchored with Polyfoam or Storm Bond™ tile adhesive.
2. Min. 28-ga steel panels, max 36.0-in. width exposed, Galvalume® or painted, anchored with Polyfoam or Storm Bond tile adhesive.
3. Polystick® Polyglass® TU Plus, REX™-SynFelt, SharkSkin® Ultra, and/or SharkSkin Ultra SA (ASTM D1970 approved)
4. Type II (No. 30) asphalt-saturated organic felt fastened with staples only as necessary to hold in place. Optional when Polystick Polyglass TU Plus, REX-SynFelt, SharkSkin Ultra, SharkSkin Ultra SA, or other ASTM D1970 approved material is used.
5. Georgia Pacific DensDeck®, GAF VersaShield® Fire Resistant Roof Deck Protection, or GAF VersaShield Fire Resistant Slip Sheet
6. 15/32-in., 5-ply A-C grade plywood decking.
7. Wood framing.



1. Artesanos World Class, Class A , clay tiles (18 × 8 in.), anchored with Polyfoam or Storm Bond™ tile adhesive.
2. Min. 28-ga steel panels, max 36.0-in. width exposed, Galvalume® or painted, anchored with Polyfoam or Storm Bond tile adhesive.
3. Polystick® Polyglass® TU Plus, REX™-SynFelt, SharkSkin® Ultra, and/or SharkSkin Ultra SA (ASTM D1970 approved) with the option to be secured with a 1-5/8 in. to 2 in. max O.D. barium ferrite wafer and 1-5/8 in. O.D. metal tin cap.
4. Type II (No. 30) asphalt-saturated organic felt fastened with staples only as necessary to hold in place. Optional when Polystick Polyglass TU Plus, REX-SynFelt, SharkSkin Ultra, SharkSkin Ultra SA, or other ASTM D1970 approved material is used.
5. Georgia Pacific DensDeck®, GAF VersaShield® Fire Resistant Roof Deck Protection, or GAF VersaShield Fire Resistant Slip Sheet
6. 15/32-in., 5-ply A-C grade plywood decking.
7. Wood framing.